

Customer :

customer

Customer part :

customer part

Comment :

Comment

S1=0.07

S2=0.52

Tmax=605

Tp S2=644.0

PI=0.12

HI=11

Sample =2923.0

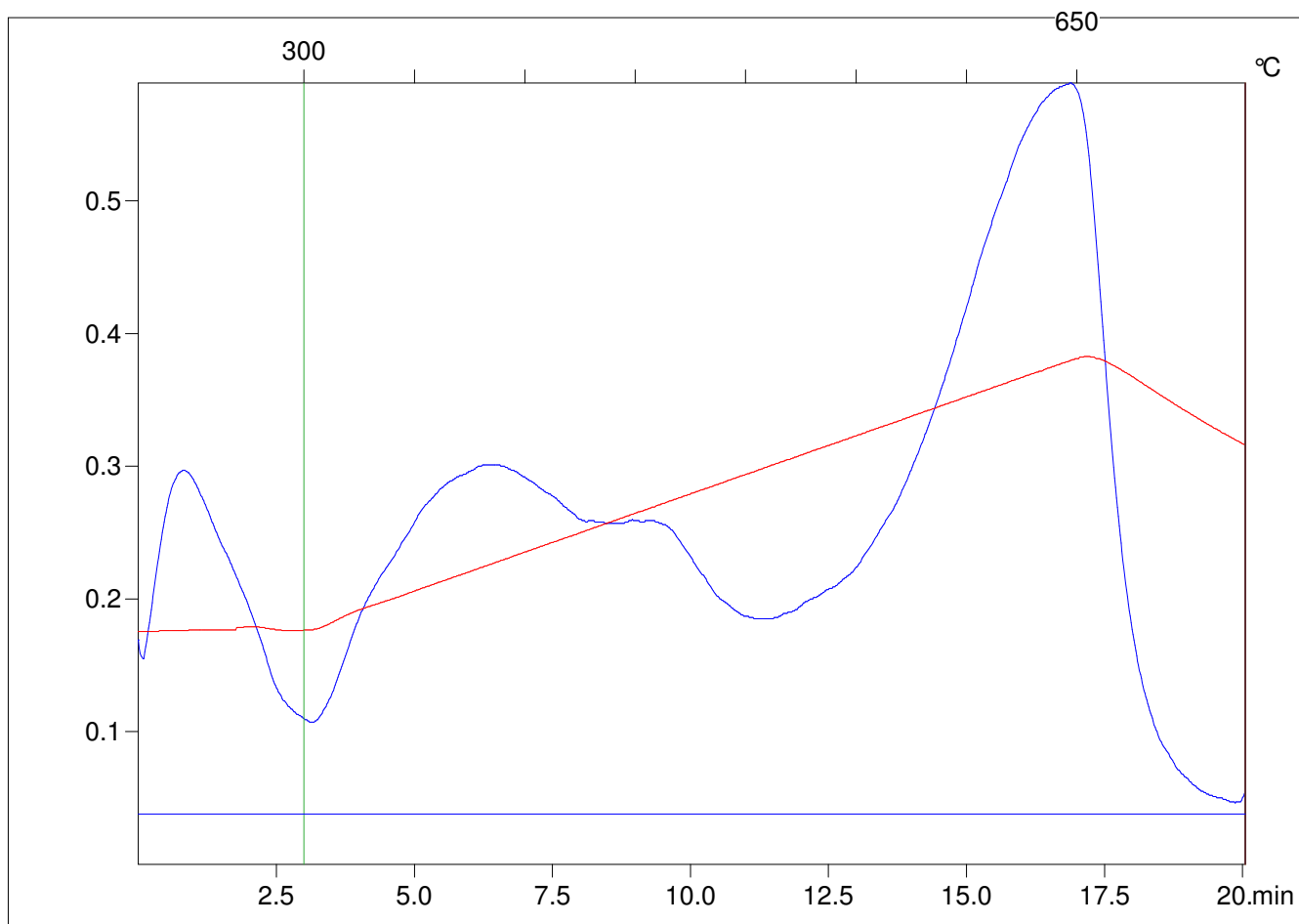
Method =Bulk Rock

Cycle=Basic

KFID(10*9)=1550

Qty =70.1

TOC=4.65



C:\VINC\PK130315\PK021.R00 : FID pyrolysis graphic

State

Pyro Status

Oxi Status